
To us, it's more than just work

Industrial Capability Statement

Buildings | Australia & New Zealand





A community of experts

Stantec's global network of designers, engineers, scientists and project managers work together at the intersection of community, creativity and client relationships. Careful balancing of these priorities results in projects that advance the quality of life in communities across the globe.

But wherever Stantec is located it is our local teams who have the skills, experience and knowledge to drive the projects in their own back yards. In Australia and New Zealand (ANZ), our local offices of award-winning multi-disciplinary engineers have been helping both private and government clients build communities for over 60 years.

Our people have long-standing client relationships and are inspired to advance the communities in which they live, delivering cost-effective, quality consultancy services.

Whether we're partnering with clients to design a hospital or mixed-use development, a research facility or industrial park, an education campus or airport, we design with community in mind because we believe in the **power of places to transform lives, to meet the needs of a community today, to help fulfil its potential tomorrow.**

Our global business

25K

Employees

400+

Locations

6

Continents

#01

From start to finish. Our team leaders continue to manage the projects for which they tender, right through to completion. Change in team management causes delays and undermines a project's stability and design direction. Continuity is more conducive to achieving your goals within programme and budget.

#02

Value-adding innovation. Stantec's Creativity & Innovation program encourages our global network of engineers to develop tools, processes and technology. These creative ideas might save time at the design stages of a project, reducing client costs. Others offer powerful marketing potential for stakeholder engagement. Celebrating our best ideas with investment means they are fully developed to benefit all our clients and communities, wherever they may be.

#03

The right experience. From research stations in Antarctica to solar projects in rural Australia. From bespoke luxury residences to affordable high-rise apartments. From stadiums to play parks... and everything imaginable in between. We have the right skillsets to help you achieve your construction goals.

#04

Focus on buildability. Engaging with engineers in the early stages can save time and money in the long-term. Pragmatic spatial considerations, site-appropriate construction methods, informed materials selection, compliance with legislation and consideration of the operational environment. Our advice gives reassurance to stakeholders, boards and financiers that all factors have been fully considered.

#05

We're at the right tables. Our people are active proponents within Australia's property industry, seeking positive change on behalf of their communities. The influential tables at which we sit include the Urban Development Institute of Australia, the Property Council of Australia, Consult Australia and Green Building Council of Australia.



We don't just say we deliver outstanding solutions and client service. We prove it.

Stantec has been recognised numerous times at the independent Financial Review Client Choice Awards (Australia & New Zealand).

2019 Financial Review Client Choice Awards Winner.

- Most Client Focused Consulting Engineer

2017 Financial Review Client Choice Awards Winner.

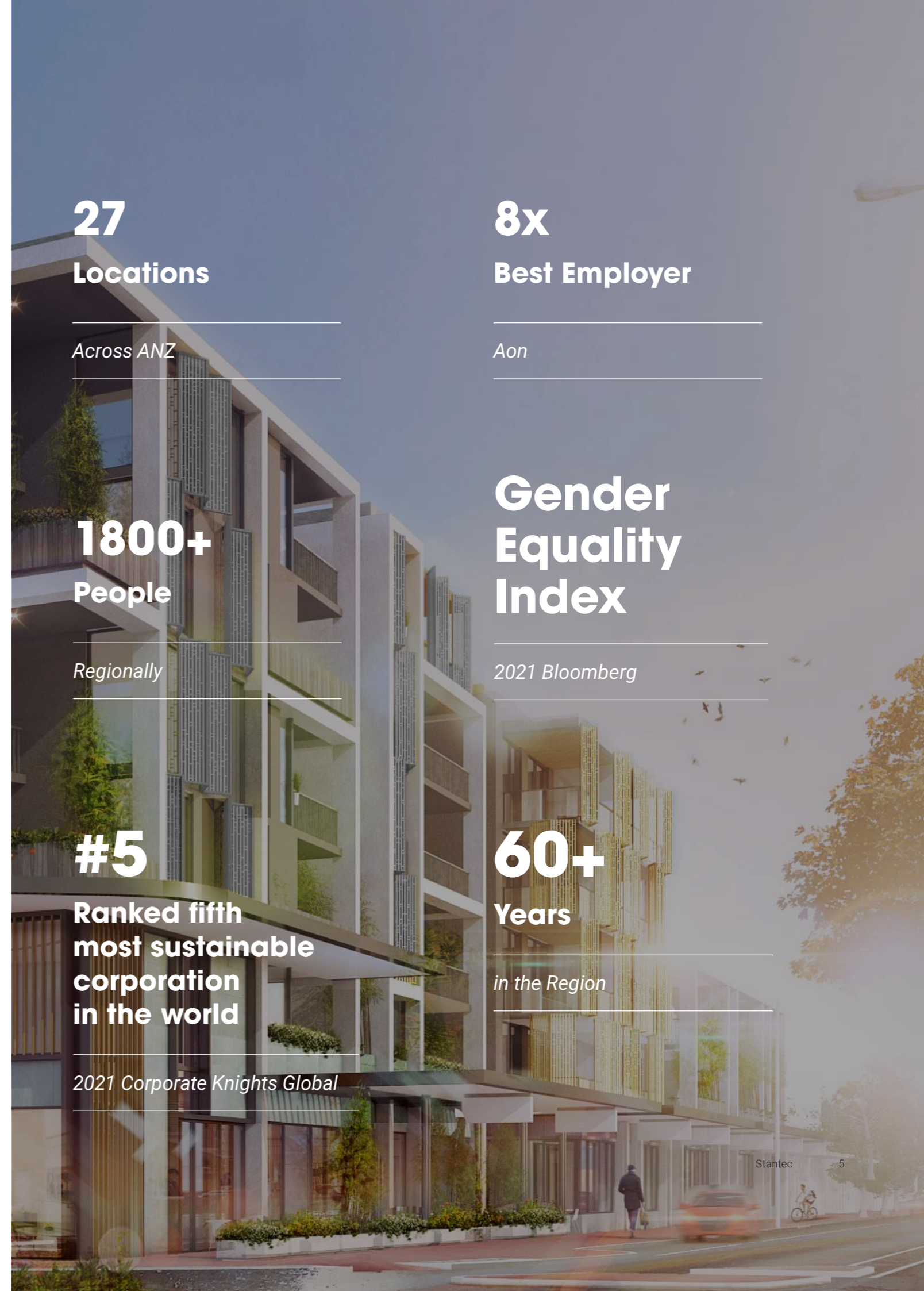
- Best Consulting Engineering Firm (revenue \$50m-\$200m)

2016 Financial Review Client Choice Awards Winner.

- Best Provider to Property Sector

2015 Financial Review Client Choice Awards Winner.

- Best Consulting Engineering Firm (revenue \$50m-200m)
- Best WA Firm
- Most Client Focused Consulting Engineer



27
Locations

Across ANZ

8x
Best Employer

Aon

1800+
People

Regionally

**Gender
Equality
Index**

2021 Bloomberg

#5
Ranked fifth
most sustainable
corporation
in the world

2021 Corporate Knights Global

60+
Years

in the Region

Our difference is our people

In recognising major risks in consultancy do not typically come from the ability to perform engineering calculations, but from having the wrong type of people sitting around the table.

Our challenge to our clients is simply to ask what would your projects look like if you had consultants that are as passionate about your vision as you are.

It is not about smart efficient design, but looking beyond the engineering services and truly understanding the best outcome for our clients.

At Stantec we believe every client offers new insights and the opportunity to innovate, but creativity cannot be there for its own sake. Solutions are truly innovative when they develop the clients' vision whilst fitting within the cold hard realities of a project program and budgetary constraints.

Why choose Stantec

We know the standards

Our work requires deep technical knowledge. We know the correct standards and lead the market in applying the best practice for a number of the world's largest technology projects.

Protect your reputation

The reputation of many of our key clients is founded upon delivery and reliability. Our technical knowledge ensures a clear focus on deliverability and maximises uptime through the application of best practice and industrial standards.

Resource efficiency

Power and water efficiency is increasingly emerging as a key driver for our clients. Concerns over both the environment and the social impacts of engineered schemes are now common place for our engineering teams.

Changing technology

Technological innovation is changing the landscape of our industry with our clients looking toward complete and fully coordinated engineered solutions. Our teams are equipped and empowered to respond to the market.

High performance

It is not just about high levels of engineering performance. As many of our core clients are international leaders, we pride ourselves on providing multi-disciplined project teams that are proactive and responsive to our clients at all times.





Sydney fish market - The Bays

The project is a rejuvenation of the Sydney Fish Market (wholesale and retail) and the expansion of the fresh food offering, creating a world-class new market district connected to the water.

The Sydney Fish Market will establish a world-class "foodie" destination. The project seeks to set in place an exemplary example of integrating the public realm and contemporary market space that will become a landmark in Sydney's unique harbour-based urban landscape. Environmental and social sustainability are essential and inseparable parts of the design. The roof, landscaped forms, open atmosphere, plantings and materials that characterise the experience of the design are examples of this union.

Stantec are providing sustainability services, ensuring the design incorporates world-leading practices and pushing new benchmarks.

The project includes:

- 80,000m² of GFA under a floating canopy, designed to encourage natural light, water collection and solar power.
- Integrated mechanical system to produce ice, refrigeration and space conditioning in an efficient manner
- Responsible materials and designed with climate adaptation at heart.
- Designed to achieve a 5 Star Green Star rated outcome.

Project value:
\$350 million

Completion:
2023

An 80,000m² cutting edge facility with A-grade services to create a world-class, sustainable new landmark for Sydney.



AHG, Hoxton Park



The project involved the construction of a new headquarters for Automotive Holdings Group (AHG) in Hoxton Park. The building consists of two levels of office space, a conference centre, computer room and a warehouse facility including high bay racking, maintenance and repair workshop.

The facility has a floor area over 15,000m² and will be the base for AHG's NSW operations. Stantec were engaged from concept design through to the construction phases.

Disciplines provided: Acoustics and Electrical

Project value: \$25 million
Completion: 2016

AAT Kings Building & Warehouse Refurbishment



Following the completion of a technical diligence report, Stantec were engaged to upgrade the building services and for the office and re-purpose the warehouse to become a bus maintenance depot for AAT Kings.

Project features:

Design of exhaust system, complete upgrade of the electrical and fire detection systems, a trade waste system to treat effluent from a bus wash bay and upgrade of the hydrant and hose reel systems including new hydrant boost pump, booster assembly and pump room

The office area was refurbished and new air conditioning systems installed including a new BMS

The main switchboard and distribution boards were upgraded and the existing emergency generator was refurbished

An automatic transfer switching system was also installed facilitating automated emergency power

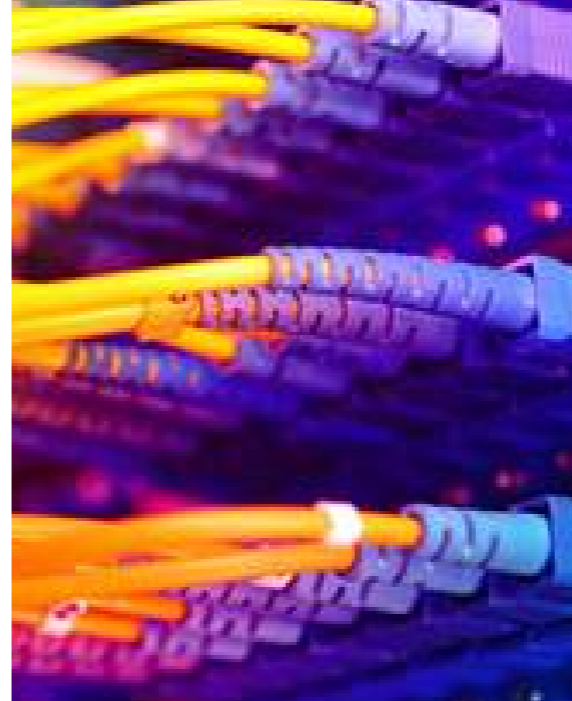
All the services were designed to allow for a possible future sub-letting of part of the ground floor and rear section of the warehouse. The upgrades also included a new computer room air conditioning system.

Disciplines provided: Electrical, Hydraulics, Mechanical, Structural, Property Asset Management and Sustainability

Project value: Undisclosed
Completion: 2016

Disciplines: Electrical, Hydraulics, Mechanical, Structural, Property Asset Management and Sustainability

Telstra Exchanges



Stantec designed and supervised electrical and mechanical upgrades and replacements at various exchanges. Projects ranged from 100kW to 8MW and included generators, switchboards, power distribution, chillers, cooling towers, pipework, pumping

and air handling plant. The importance of the public telephone network and connected businesses meant downtime had to be avoided or minimised.

Woolworths Brisbane Regional Distribution Centre



Woolworths Supply Chain carried out a Regional Distribution Centre rollout program throughout the major centres around Australia. The Brisbane distribution centre consists of an ambient temperature warehouse, a temperature controlled/cool-room warehouse, an office block and various other ancillary buildings.

The Centre is one of the largest industrial facilities constructed in south-east Queensland.

Stantec designed the electrical, building management system, communications, security and lift services. The design provides state of the art energy efficient lighting systems. The design provides state of the art energy efficient lighting systems.

Australia Post



Stantec worked with Australia Post on the development of engineering designs and sustainability standards for their new office, retail and logistics development for their proposed new facilities.

The purpose of the design standards was not only to update existing engineering documents but to also:

Bring the documentation in line with the sustainability aspirations for their property portfolio.

Future proof the standards to ensure the changing needs of the postal and parcel logistics facilities

BIM documentation was a key element of the project delivery requirement which was also incorporated into the standards.



Canberra Data Centres

Designed to maximise the power use effectiveness of Canberra's Data facilities

Stantec were first engaged by Department of Human Services (Medicare and Centrelink) to review Canberra Data Centres' facilities against the concurrent maintainability requirements of TIA 942 – the North American standard for data centres – commonly applied throughout the world.

Since completing this review, Stantec have worked directly with Canberra Data Centres to complete designs for their 14MW Fyshwick and 4.5MW Hume facilities in accordance with international standards and industry best practice.

The Federal Government has now implemented a timeline towards ensuring their equipment is located in environmentally considerate data centre facilities. Stantec have worked with Canberra Data Centres to maximise the Power Use Effectiveness (PUE) of their facilities, as well as working to establish NABERS ratings in accordance with the latest NABERS for Data Centres tool.

Project value: \$70 million (Fyshwick 1)

Global Switch Sydney East Data Centre Stage 2 and 3

This iconic structure in Sydney's Darling Harbour involved a new facility of approximately 19,000m² comprising of technical space, electrical and mechanical plant space, technology support areas and offices.

It also included:

- New 11kV switchgear
- DRUPS
- Power Distribution Systems
- 3.3kV Chillers
- Mechanical pumps and fans

- CRACS
- ICMS
- SCADA & power monitoring system
- Small power and lighting

Stantec were engaged to review and advise on the design finalisation drawings as well as undertaking site inspections. The goal for the facility was to meet growth projections for the next 20 years, therefore it was decided for the design to be modular in nature to allow for this agility.



Coca-Cola Amatil Blow Fill Line

Stantec were involved in this project as part of Coca-Cola Amatil's implementation of blow-fill technology at production plants throughout Australia.

Electrical, fire, hydraulics and structural engineering services were required to replace the existing production lines with the new blow-fill technology at the Perth bottling plant. This project involved:

- Relocating blow-fill equipment from eastern states to the WA plant to consolidate production
- Reconfiguring the blow-fill line to accommodate extra production
- Refurbishing existing warehouse floor and altering of existing industrial waste lines to

suit new blow-fill line configuration

- Stainless steel pipework was implemented due to nature of Coca Cola manufacturing process
- Compliance with NCC Section J energy efficiency requirements
- Modifying the wet sprinkler suppression system to allow for the new production line



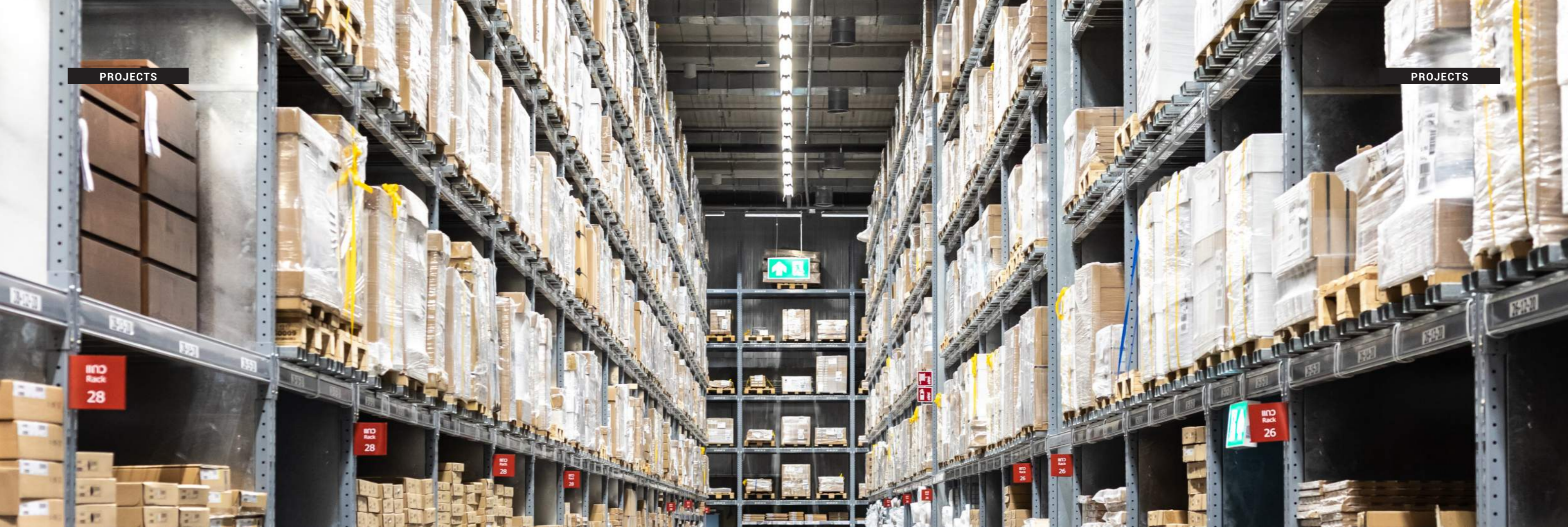
Blackwoods Warehouse, Karratha

WGE was engaged on the development of a new Blackwoods Warehouse in Karratha. The warehouse is Western Australia's first ever project to be awarded Green Star 4 Star Industrial V1 Design certification, which was successfully led by WGE's sustainability team. The Blackwoods Karratha Retail Warehouse achieved the prestigious Green Star certification with the Green Building Council of Australia (GBCA) through a number of innovative sustainable initiatives and materials that were implemented and used

throughout the build, including the implementation of one of the first large scale PV solar systems powered on the Horizon Power network.

The location of the new warehouse in a remote and cyclonic region brought about challenges to the team in both climatic conditions and the availability of materials. WGE's team took into account conditions such as humidity, heat and cyclonic structural issues to ensure appropriate sustainability solutions and a robust PV solar installation.





ALDI Distribution Centre, NSW

The new ALDI facility will service Newcastle, Central Coast, Hunter Valley, and Northern NSW coastal areas as well as Western and New England areas.

The building includes: Warehouse space 53,000m², cool room / freezer room space 7,000m² and three levels of office space 4,200m².

Woolworths Yennora Distribution Centre

The project consisted of refurbishing the existing distribution centre and associated office and amenities building. Stantec were responsible for lighting, general power, voice and data, security and CCTV systems for the upgrade.

ALDI Distribution Centre, WA

ALDI's first step in establishing a WA presence was to commission the construction of this 45,000m² facility located within the Jandakot Airport industrial precinct. Stantec were engaged by Georgiou Group to provide full electrical, hydraulic and sustainability design services, as well as peer review roles for fire, civil and mechanical services.

Timing was critical, with opening of the first four local stores dependent on the completion of this project.

The Stantec team leveraged experience gained during the development of their east-coast Distribution Centres, in particular their recent Brendale facility, in order to minimise construction time and potential re-work to meet ALDI's expectations.



Project delivery and offering

Buildings ANZ project coordination

No matter what the project, no matter what your needs are, we have the team to help make it happen.

A Stantec Project Engineer will be:

- Responsible for ensuring cohesive team delivery
- The first point of contact for the client

What does this mean for our clients?

Not only will you receive the very best from all Stantec consultants, you will receive seamless design integration across all Stantec disciplines. This will result in identifying and minimising scope-gap, cost or programme risks.



PROJECT DISCIPLINES



Working together

Communities are fundamental. Whether around the corner or across the globe, they provide a foundation, a sense of place and of belonging. That's why at Stantec, we always design with community in mind.

We care about the communities we serve—because they're our communities too. We're designers, engineers, scientists, and project managers, innovating together at the intersection of community, creativity, and client relationships. Balancing these priorities results in projects that advance the quality of life in communities across the globe.



Connect with us



stantec.com/australia